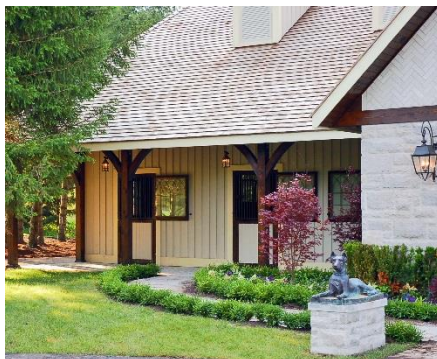


Private Horse Barn



WATERLOO
ENERGY PRODUCTS



Completion: 2007

Location: Ontario, Canada

Square Feet: 27,500

Mechanical Design-Build Including:

- HVAC design, including high efficiency propane boilers and ventilation system
- Permit package
- HVAC installation of extensive in-floor heating system, horse wash area and ventilations systems, etc